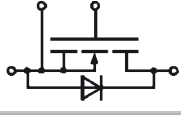
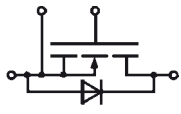
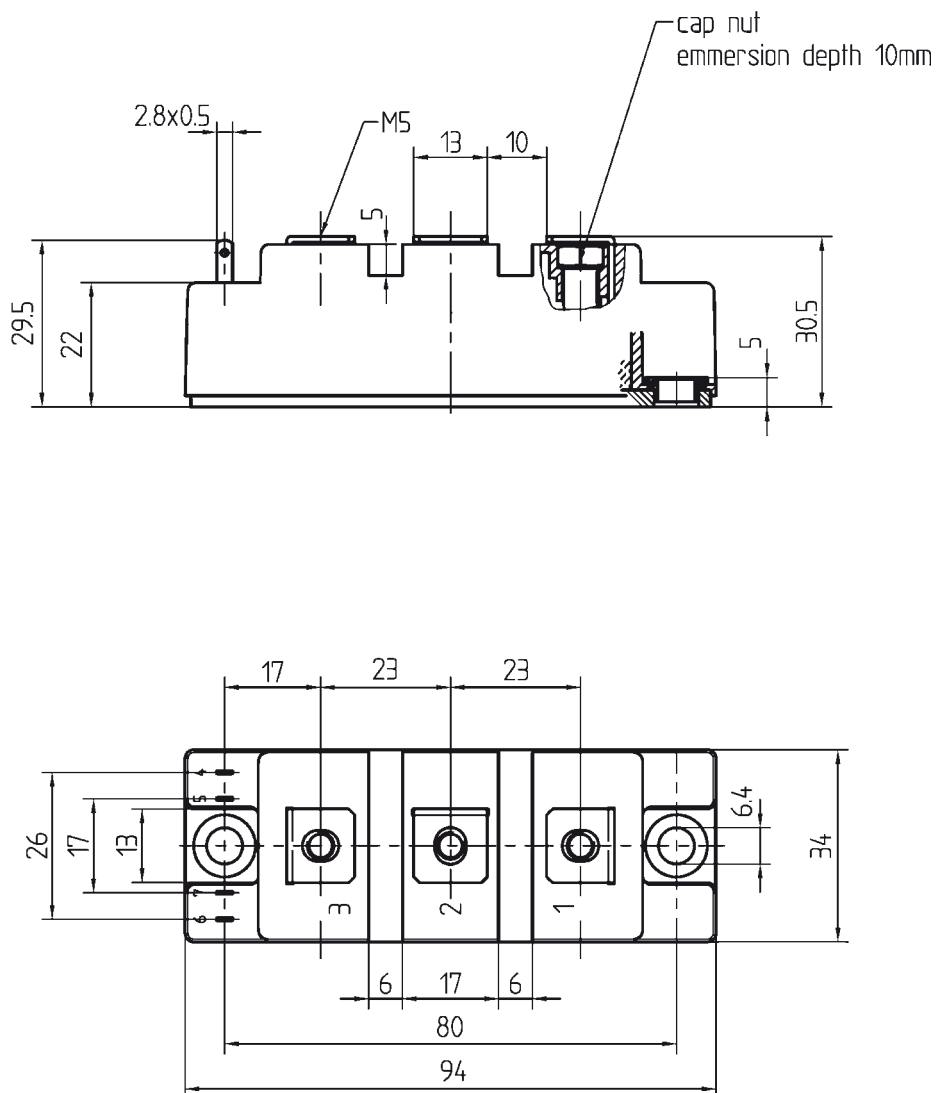


Modules - MOSFET - SEMITRANS

Type	V_{DS} V	I_D @ $T_C = 25^\circ\text{C}$ A	$R_{DS(on)}$ @ $T_j = 25^\circ\text{C}$ typ. m Ω	$R_{th(j-c)}$ K/W	Case	Circuit
100 V						
SKM 111 AR	100	200	7	0.18	M1	
200 V						
SKM 121 AR	200	130	18	0.18	M1	
SKM 180 A020	200	180	9	0.18	M1	

Cases

SEMISTRANS M1



Dimensions in mm

Modules - MOSFET - SEMITOP

Type	V_{DS} V	I_D @ $T_c = 25^\circ\text{C}$ A	$R_{DS(on)}$ @ $T_j = 25^\circ\text{C}$ typ. m Ω	$R_{th(j-s)}$ K/W	Case	Circuit
55 V						
SK 150 MHK 055 T	55	240	1.1	0.8	3	
SK 80 MD 055	55	117	2.2	1.1	2	
SK 80 MBBB 055	55	117	2.2	1.1	3	
75 V						
SK 300 MB 075	75	290	-	0.45	3	
SK 70 MD 075	75	100	6.2	1.1	2	
100 V						
SK 260 MB 10	100	230	-	0.45	3	
SK 85 MH 10 T	100	80	-	1.1	2	
SK 115 MD 10	100	80	-	1.1	3	
SK 60 MD 10	100	80	-	1.1	2	

For detailed case drawings please see page 23